

LED Display Integration

Updated: **2018-03-01**

Latest version always at: <https://goo.gl/ZYemeB> *

Starting with build 3.2.2.2636 NumberOk offers a feature to display the recognized license plate on LED displays.



Supported Displays

1

Configuring the feature

1

Add display under Integration tab

1

Add display feature via Reaction

3

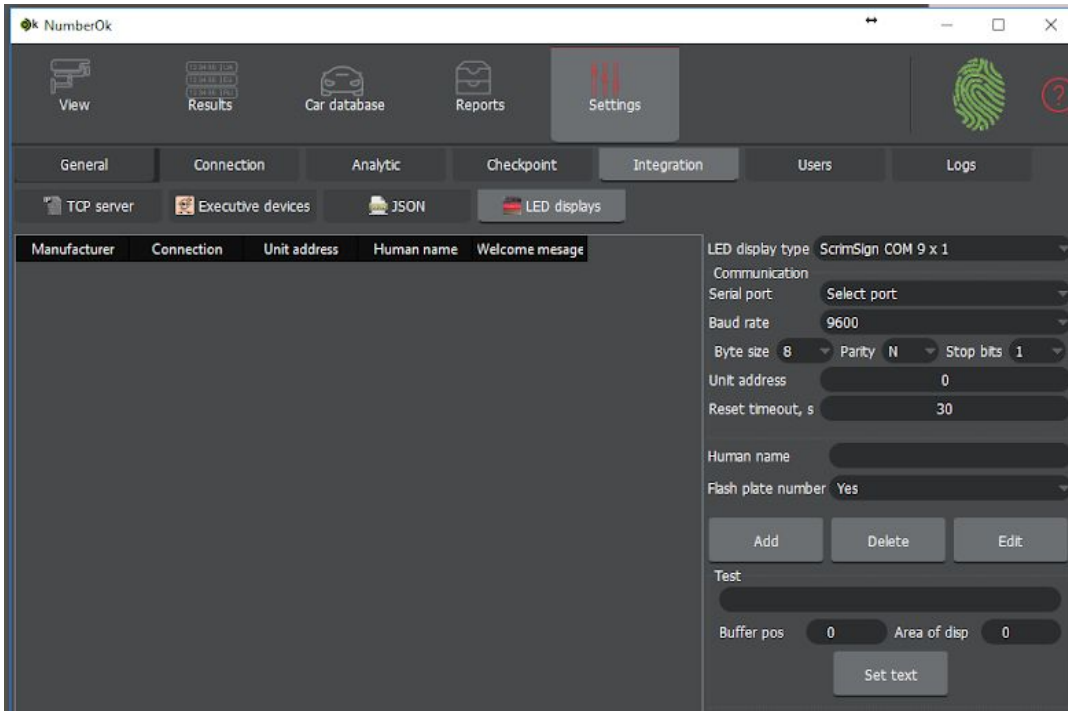
Supported Displays

- ScrimSign displays supported only <http://www.scrimsign.co.uk>
- 9x1 text display supported only
- Serial connection supported only

Configuring the feature

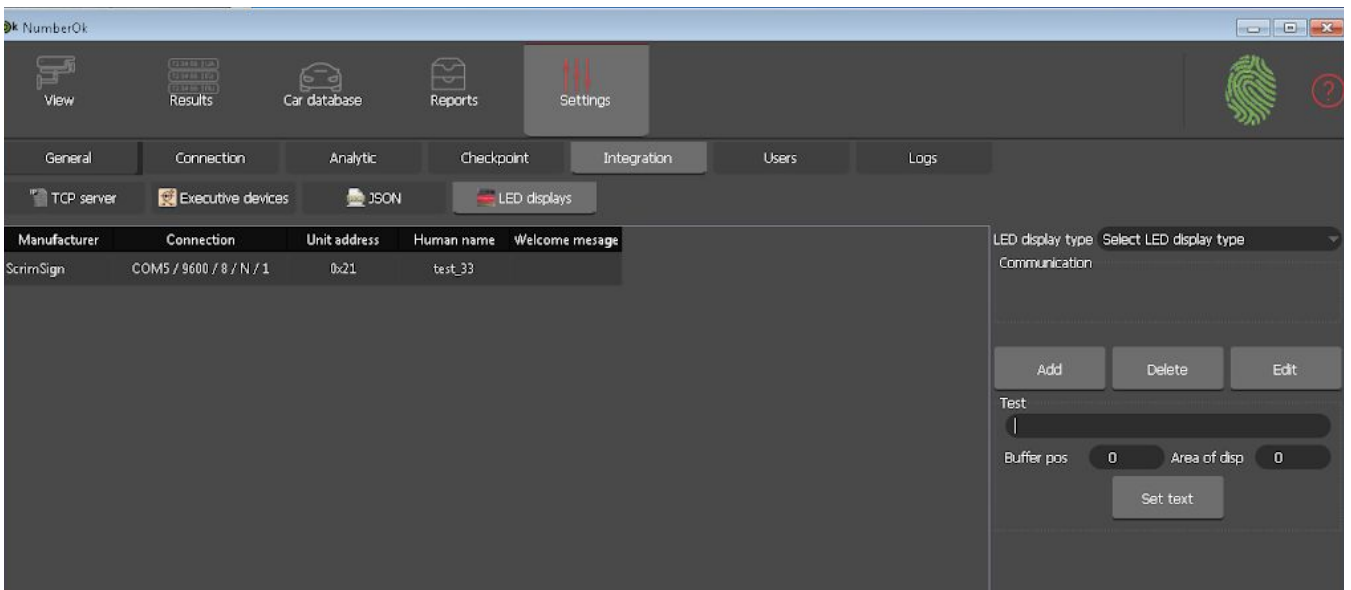
Add display under Integration tab

Complete all the parameters for the COM port. Please, refer to the official vendor's documentation for details.



To check the correctness of integration:

- 1) select a particular display in the section on the left;
- 2) put any text (9 symbols or less) to the field “Test” and click Set text.



The text should be displayed after a short delay.

Add display feature via Reaction

