

Kindly Notice

The handle of L7000 can be changed from RIGHT to LEFT, please check it as following :



1. Take out the screw with a screwdriver, and make a 180° spin of the handle.



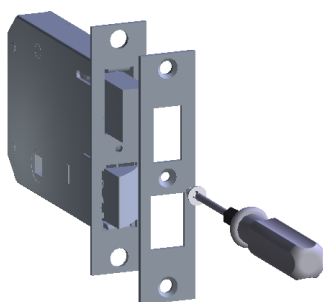
2. Reload the handle and fix it with the screw.



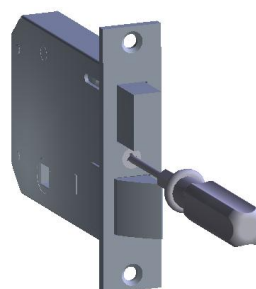
3. Remove the Waterproof washer, take the screw out of the hole in front panel.



4. Fix the screw into the other hole and cover the washer.



5. Take the screw out of the Strike plate and then take down the plaque and spin the latch bolt 180°.



6. Recover the plaque and fix it with the screw.

NOTE: When changing the handle from RIGHT to LEFT of the SINGEL latch bolt, just take Step 1 and 2, and make the LOCK body 180° spin. While changing the double latch bolt one, it need to take Step 1 – Step 6.